

CIT

Relay & Switch

SMART SOLUTIONS

are found here

robotics

switches & relays



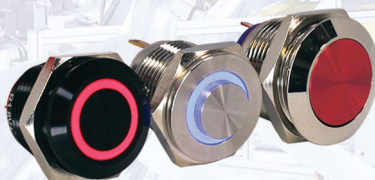
AH Series
19mm
IP67 Sealing Degree
Momentary
Panel Mount
1A@24VDC / 125VAC, 0.5A@250VAC



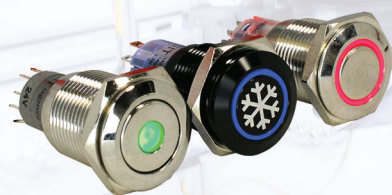
AHB Series
19mm
IP67 Sealing Degree
Momentary or Latching
Panel Mount
1A@24VDC, 3A@125VAC / 250VAC



AHU Series
19mm
IP67 Sealing Degree
Momentary
Panel Mount
3A@125VAC, 3A@250VAC



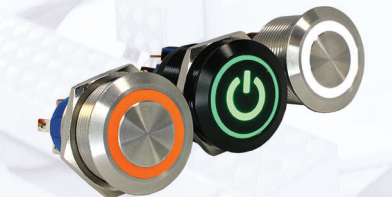
BH Series
16mm or 19mm
IP67 Sealing Degree
Momentary
Panel Mount
2A@36VDC, 1A@125VAC,
0.5A@250VAC



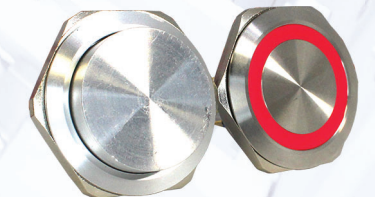
CH Series
16mm
IP40 or IP67 Sealing Degree
Momentary or Latching
Panel Mount
1A@24VDC, 1A@125VAC,
0.5A@250VAC



DH Series
22mm, 25mm, 28mm & 30mm
IP67 Sealing Degree
Momentary or Latching
Panel Mount
2A@24VDC / 125VAC, 1A@250VAC



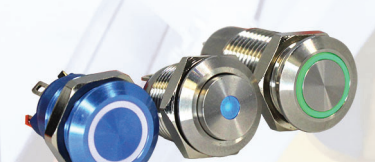
DH22U Series
UL Approved
22mm
IP67 Sealing Degree
Momentary or Latching
Panel Mount
3A@125VAC, 3A@250VAC



DH40 Series
40mm
IP67 Sealing Degree
Momentary or Latching
Panel Mount
2A@24VDC / 125VAC, 1A@250VAC



EH Series
12mm
IP67 Sealing Degree
Momentary
Panel Mount
2A@48VDC



FH Series
12mm
IP67 Sealing Degree
Momentary or Latching
Panel Mount
2A@48VDC

find your **SMART SOLUTIONS** here



GH Series
10mm
IP40 Sealing Degree
Momentary or Latching
Panel Mount
2A@48VDC



TH Series - Capacitive Touch
16mm, 19mm, 22mm & 25mm
IP68 Sealing Degree
Momentary, Latching or 30-Second
Hold
Max Current : 15mA
Max Voltage : 24VDC



J115F1, F2, & F3 Series
UL/cUL and TÜV Certified
PC Pin or Solder Lug
F Class Insulation Standard
Up to 50 Amp



Ice Cube Style Relays
IP67 Sealing Degree
UL/cUL and TÜV Certified
PC Pin or Solder Lug
Up to 20 Amp



CIT Relay & Switch validation test lab

CIT Relay & Switch has a sophisticated test lab for failure analysis and material testing, helping our customers solve their toughest problems. Our aim is to establish long-lasting relationships with our customers by providing comprehensive technical expertise using our state-of-the-art test lab. Providing accurate and concise solutions, we give our customers the best explanation about how their components perform. Contact a CIT Application Engineer to validate product suitability for your application with real-time live testing backed with data.



20550 Commerce Blvd, Rogers, MN 55374 USA
763.535.2339 • sales@citrelay.com

CIT Relay & Switch manufactures a broad array of RoHS compliant electromechanical automotive, telecom, security, industrial and HVAC relays and switches. Thank you for giving CIT Relay & Switch the opportunity to demonstrate why so many are joining our growing list of satisfied customers — customers who have come to rely on the service and quality provided by CIT Relay & Switch.

find your **SMART SOLUTIONS** here